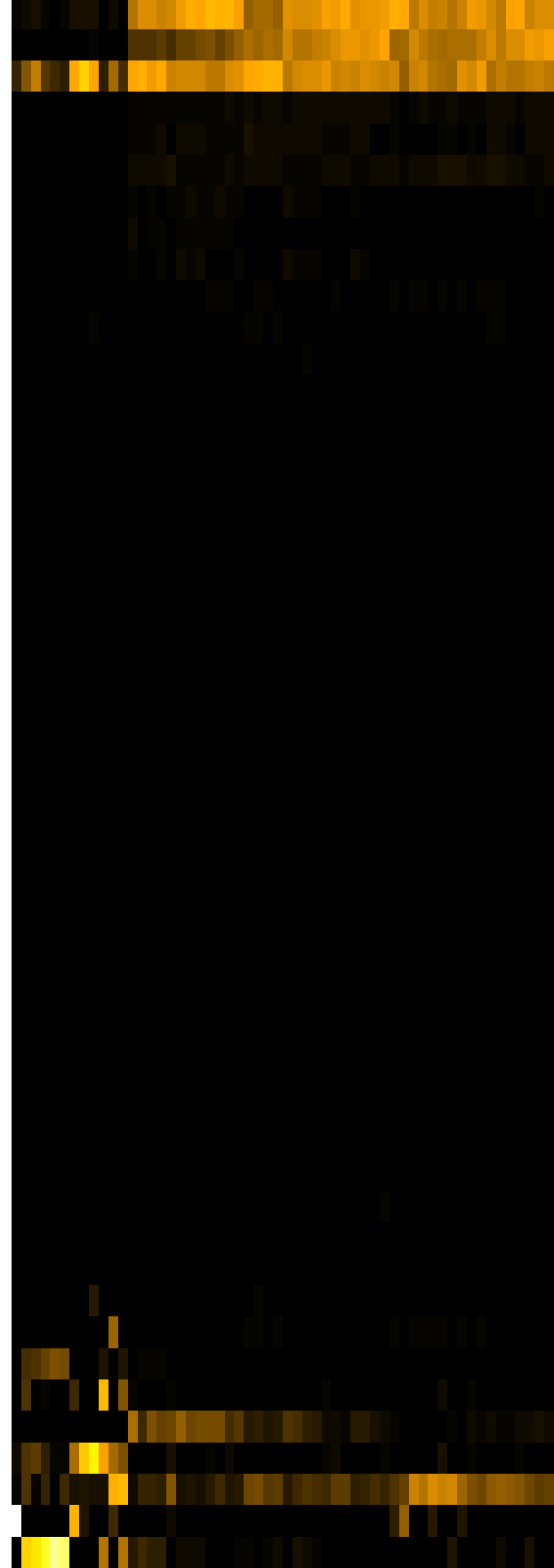
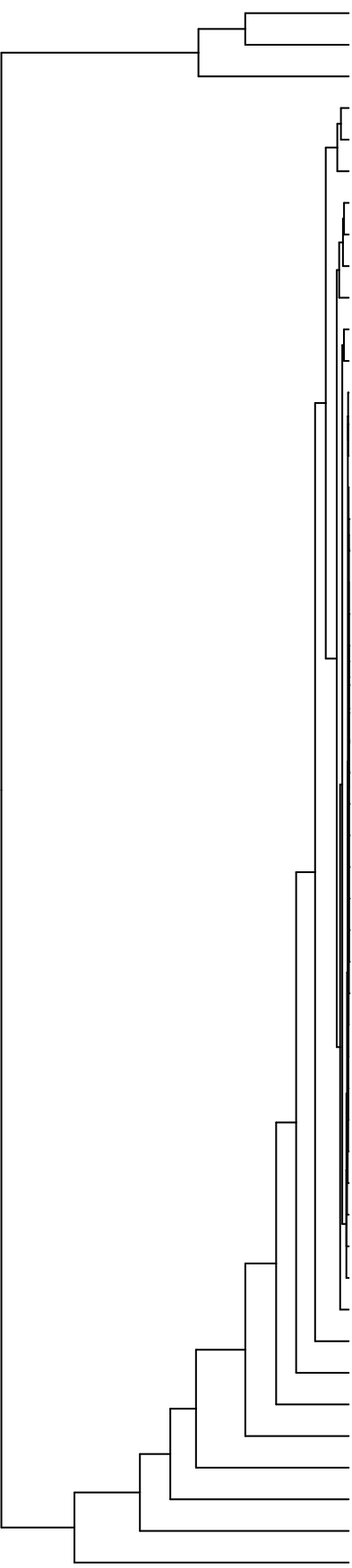


Group006
 H Final -PMA
 F Final -PMA



Veillonella
 Haemophilus
 Streptococcus
 Eikenella
 Aggregatibacter
 Granulicatella
 Campylobacter
 Leptotrichia
 Prevotella
 Schaalia
 Gemella
 Porphyromonas
 Solobacterium
 Lachnoanaerobaculum
 Oribacterium
 Lautropia
 Absconditabacteria_(SR1)_[G-1]
 Cutibacterium
 Acidovorax
 Capnocytophaga
 Lachnospiraceae_[G-2]
 Acinetobacter
 Serratia
 Novosphingobium
 Leifsonia
 Agrobacterium
 Phyllobacterium
 Sphingobium
 Riemerella
 Microbacterium
 Siccationidurans
 Saccharibacteria_(TM7)_[G-5]
 Saccharibacteria_(TM7)_[G-6]
 Lancefieldella
 Saccharibacteria_(TM7)_[G-1]
 Delftia
 Alloprevotella
 Actinomyces
 Pseudomonas
 Stomatobaculum
 Catonella
 Staphylococcus
 Rothia
 Salmonella
 Raoultella
 Fusobacterium
 Klebsiella
 Neisseria
 Enterobacter
 Citrobacter

Genus

F28914_S603
 F28914_S450
 F28914_S452
 F28914_S602
 F28914_S449
 F28914_S601
 F28914_S440
 F28914_S437
 F28914_S593
 F28914_S438
 F28914_S596
 F28914_S595
 F28914_S132
 F28914_S131
 F28914_S116
 F28914_S114
 F28914_S275
 F28914_S273
 F28914_S119
 F28914_S276
 F28914_S293
 F28914_S291
 F28914_S290
 F28914_S295
 F28914_S296
 F28914_S134
 F28914_S277
 F28914_S118

Samples